

# 82D40-2/82D63-5

## Enclosed Pneumatic Power Clamps | Dual Arm | Features and Benefits | Technical Information

**Base Model**

Model	Description
82D40-2	40 mm Cylinder (G1/4 Port)
82D63-5	63 mm Cylinder (G1/4 Port)

**Clamp Arm Shaft**


Model	Description
23	includes long drive shaft ends on both sides fit for all clamping arms (standard)

**Hand Lever**

Model	Description
0	Hand Lever not available

**Sensor**

Model	Description
C9	includes Sensing System with M12x1 Connector (8EA-024-2) Standard



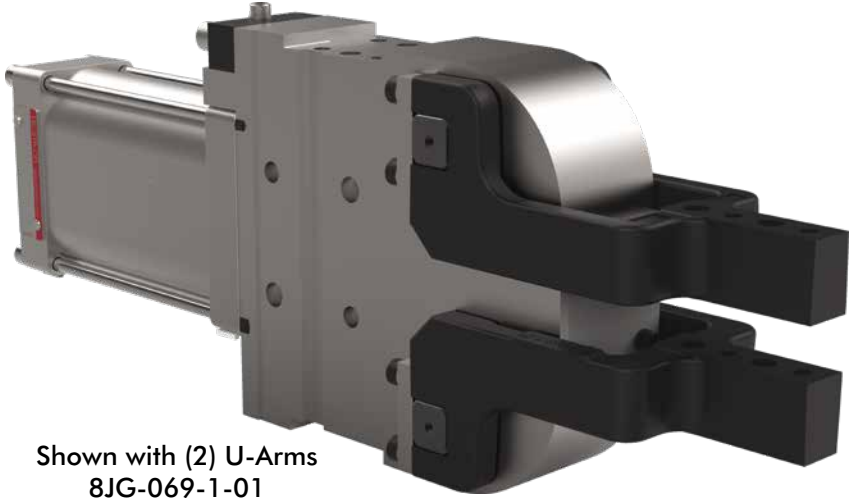
**Clamp Arms**

Model	Description
B	Base model only. Order clamps arms separately. See below.


**Opening Angle**

Model	Opening Angle
0	180° (standard)
1	160°
2	140°
3	120°
4	100°
5	80°
6	60°
7	40°
8	20°


*Reduced opening angles available upon request.*



Shown with (2) U-Arms  
8JG-069-1-01  
(order separately)



**82D63-5**  
Max Holding  
400 Nm [295 ft-lb]  
Max Clamping Torque  
120 Nm [88 ft-lb]  
at 5 bar [72 psi]



**82D40-2**  
Max Holding  
140 Nm [103 ft-lb]  
Max Clamping Torque  
60 Nm [44 ft-lb]  
at 5 bar [72 psi]

### U-type Central Clamping Arm



Model	Order No. (1 clamp arm)
82D40-223C900B	8JG-065-2-01
82D63-523C900B	8JG-069-1-01

Alternate Clamp Arm mounting positions



### Lateral Clamping Arm

**Clamp Arm Variants**  
Left Side, Right Side, Both Sides



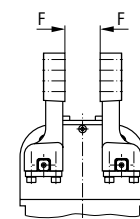
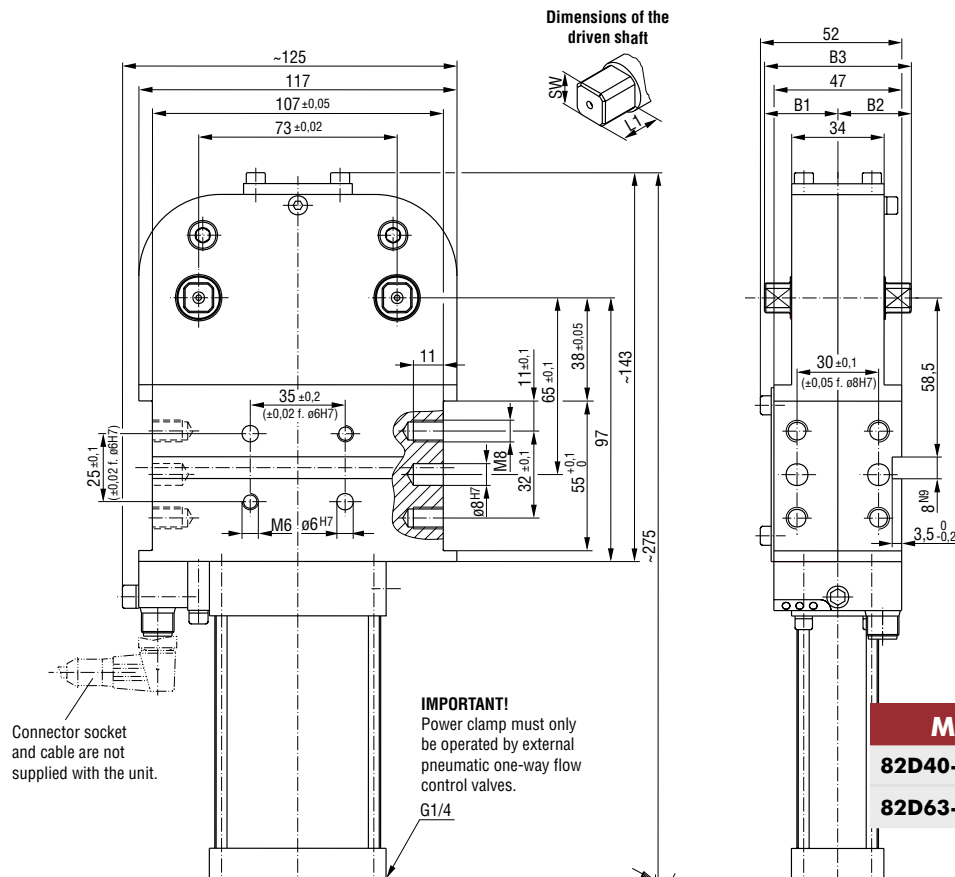
Model	Order No. (1 clamp arm)
82D40-223C900B	8JG-066-1-01
82D63-523C900B	8JG-070-1-01

# 82D40-2/82D63-5

## Enclosed Pneumatic Power Clamps | Dual Arm | Dimensions

Model	Clamping position	Standard opening angle	Driveshaft	Max. holding torque Nm [ft-lb]	Clamping torque at 5 bar Nm [ft-lb]	Cylinder Ø mm [in]	Air consumption per double stroke at 5 bar dm <sup>3</sup> [ft <sup>3</sup> ]	Weight ~ kg [lbs]
82D40-223C900B	vertical	180°	lateral, both sides	55 [40]	55 [40]	40 [1.57]	1,2 [0.04]	2,5 [5.50]
82D63-523C900B			U-type clamping arms	120 [88]	120 [88]	63 [2.48]	3,8 [0.13]	4,5 [9.90]

### 82D40-223C900B



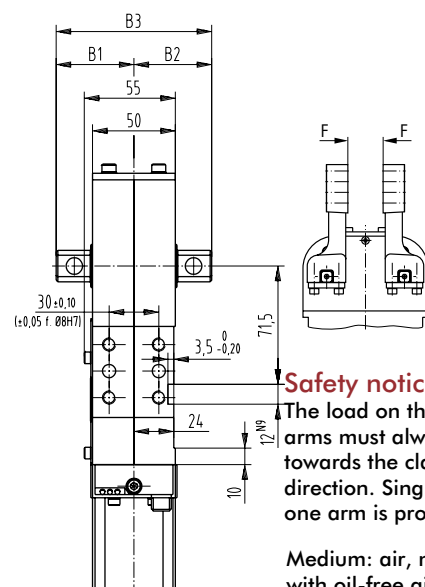
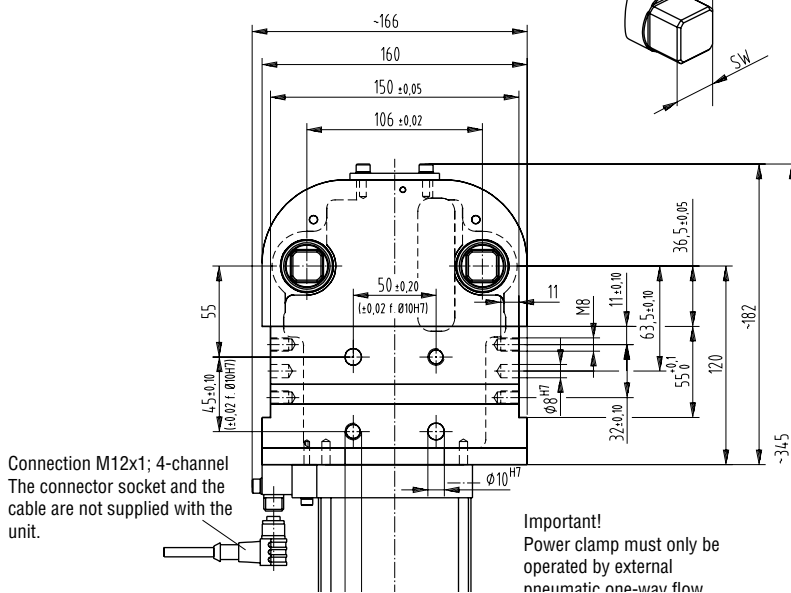
#### Safety notice:

The load on the clamping arms must always point towards the clamping direction. Single load of one arm is prohibited

Medium: air, max. 6 bar, operation with oil-free air is permissible

Model	B1	B2	B3	L1	SW	G
82D40-223C900B	30	30	60	12,5	11	1/4
82D63-523C900B	47	47	94	21	19	

### 82D63-523C900B



#### Safety notice:

The load on the clamping arms must always point towards the clamping direction. Single load of one arm is prohibited

Medium: air, max. 6 bar, operation with oil-free air is permissible

# U-ARMS CENTER (STEEL)

Enclosed Pneumatic Power Clamps | Dual Arm | Dimensions and Technical Specifications

- Clamping arm variants for **82D40-2**

Clamping arm variant U-type central clamping arm

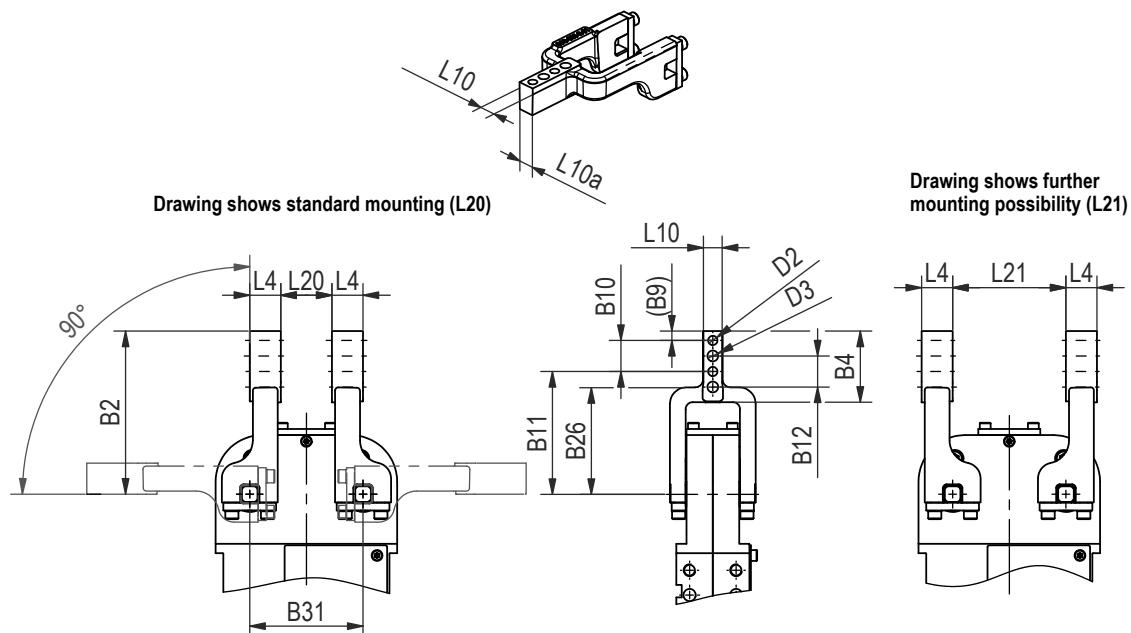


Base model with 2 U-type clamping arms, small gap between clamping arms

## U-type central clamping arm | Technical Information

Model	Order no. for U-type clamping arm set (1 clamping arm)	Clamping position	Standard opening angle	B2	B4	B9	B10	B11	B12	B26			
82D40-223C900B	8JG-065-2-01	vertical	180°	105	45,3	6	±0,02	+0,1	±0,2	20	79	20	68,2

Model	Order no. for U-type clamping arm set (1 clamping arm)	B31	D2	D3	L4	L10	L10a	L20	L21
82D40-223C900B	8JG-065-2-01	±0,02	H7 ø	ø		±1,1	~		
82D40-223C900B	8JG-065-2-01	73	6	7	20	12	11,3	33	73



# U-ARMS CENTER (STEEL)

Enclosed Pneumatic Power Clamps | Dual Arm | Dimensions and Technical Specifications

- Clamping arm variants for **82D63-5**

Clamping arm variant U-type central clamping arm

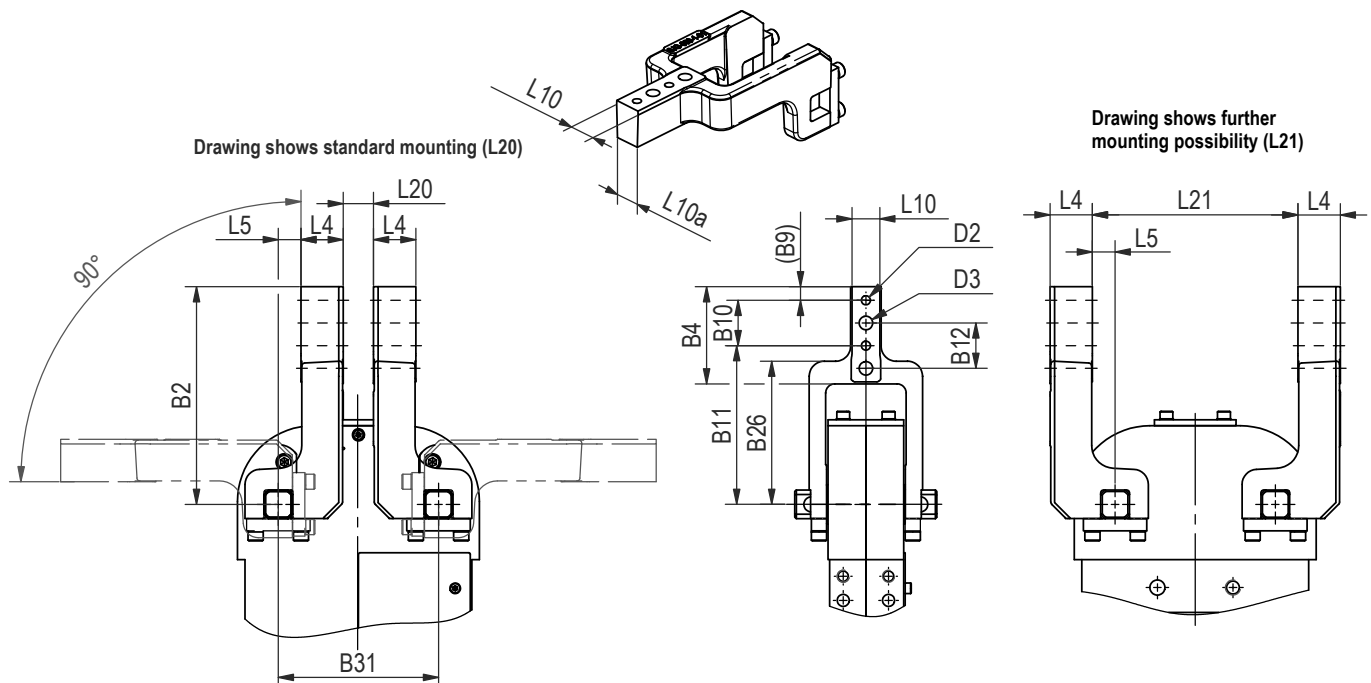


Base model with 2 U-type clamping arms, small gap between clamping arms

## U-type central clamping arms | Technical Information

Model	Order no. for U-type clamping arm set (1 clamping arm)	Clamping position	Standard opening angle	B2	B4	B9	B10	B11	B12	B26
82D63-523C900B	8JG-069-1-01	vertical	180°	144	64,3	9	±0,02	+0,1	±0,2	95

Model	Order no. for U-type clamping arm set (1 clamping arm)	B31	D2	D3	L4	L5	L10	L10a	L20	L21
82D63-523C900B	8JG-069-1-01	±0,02	H7 ∅	∅	28	15	±1,2	~	20	136



# LATERAL (SIDE) ARMS

## Enclosed Pneumatic Power Clamps | Dual Arm | Dimensions and Technical Specifications

- Clamping arm variants for **82D40-2**

### Clamping arm variant

- Lateral clamping arm left
- Lateral clamping arm right
- Lateral clamping arm both sides



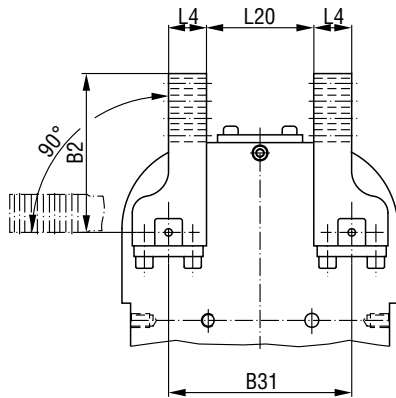
Base model with 4 lateral clamping arms, large gap between clamping arms

### Lateral clamping arm | Technical Information

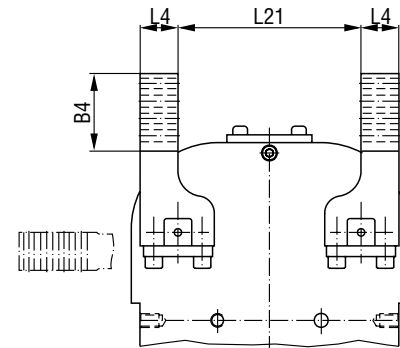
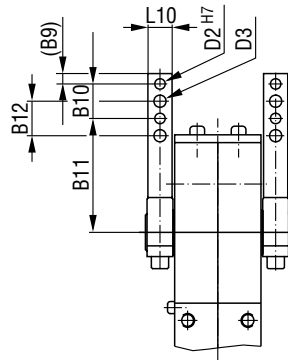
Model	Clamping arm variant	Order no. for 1 set of lateral clamping arms (1 clamping arm)	Clamping position	Standard opening angle	B2	B4	B9	B10	B11	B12
82D40-223C900B	lateral, left lateral, right lateral, both sides	8JG-066-1-01	vertical	180°	105	45	6	±0,02	+0,1	±0,2

Model	Clamping arm variant	Order no. for 1 set of lateral clamping arms (1 clamping arm)	B31	D2	D3	L4	L10	L20	L21
82D40-223C900B	lateral, left lateral, right lateral, both sides	8JG-066-1-01	±0,02	H7 ∅	∅		-0,1		
82D40-223C900B	lateral, left lateral, right lateral, both sides	8JG-066-1-01	73	6	7	20	12	33	73

Drawing shows standard mounting (L20) with four lateral clamp arms



Drawing shows further mounting possibility (L21)



# LATERAL (SIDE) ARMS

## Enclosed Pneumatic Power Clamps | Dual Arm | Dimensions and Technical Specifications

- Clamping arm variants for **82D63-5**

### Clamping arm variant

- Lateral clamping arm left
- Lateral clamping arm right
- Lateral clamping arm both sides



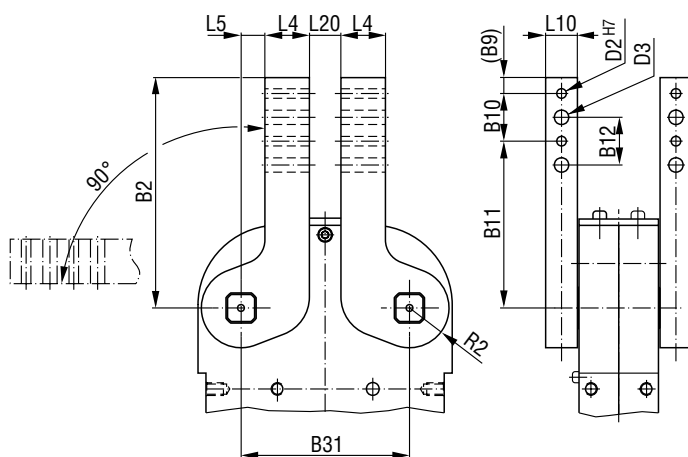
Base model with 4 lateral clamping arms, large gap between clamping arms

### Lateral clamping arms | Technical Information

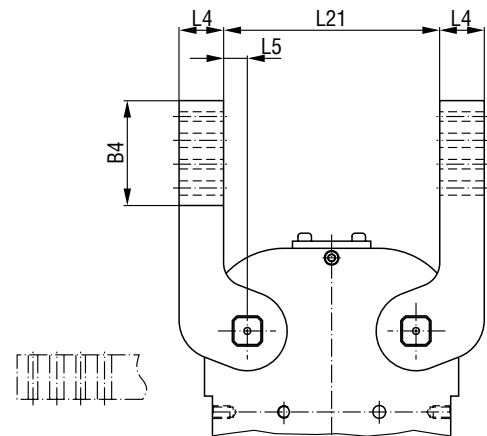
Model	Clamping arm variant	Order no. for 1 set of lateral clamping arms (1 clamping arm)	Clamping position	Standard opening angle	B2	B4	B9	B10	B11	B12
<b>82D63-523C900B</b>	lateral, left lateral, right lateral, both sides	<b>8JG-070-1-01</b>	vertical	180°	144	74	9	30	105	30

Model	Clamping arm variant	Order no. for 1 set of lateral clamping arms (1 clamping arm)	B31	D2	D3	L4	L5	L10	L20	L21	R2
<b>82D63-523C900B</b>	lateral, left lateral, right lateral, both sides	<b>8JG-070-1-01</b>	±0,02	H7 ∅	∅	28	15	20	20	136	28

Drawing shows standard mounting (L20) with four lateral clamp arms



Drawing shows further mounting possibility (L21)

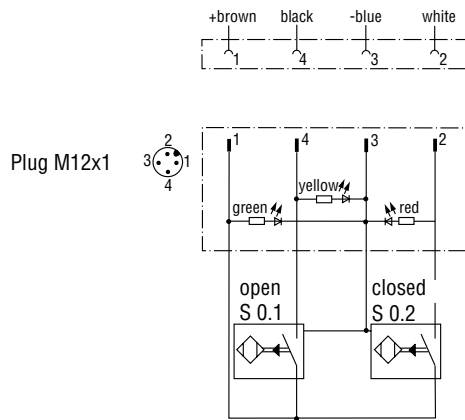


# 82D40-2/82D63-5

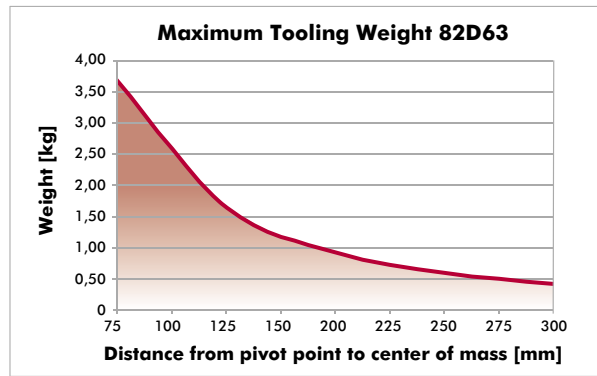
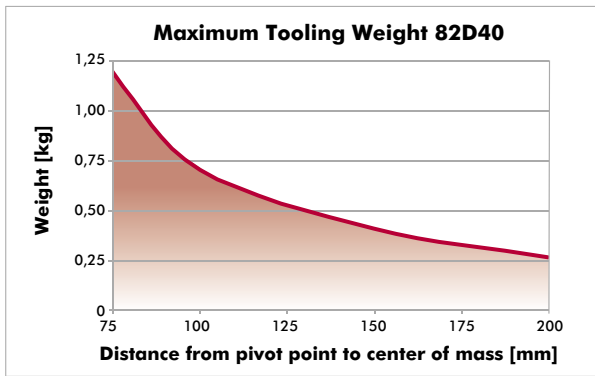
## Enclosed Pneumatic Power Clamps | Dual Arm | Technical Specifications

### Wiring diagram of electrical sensing system

Sensing system immune to interference from d.c. arc welding and a.c. arc welding

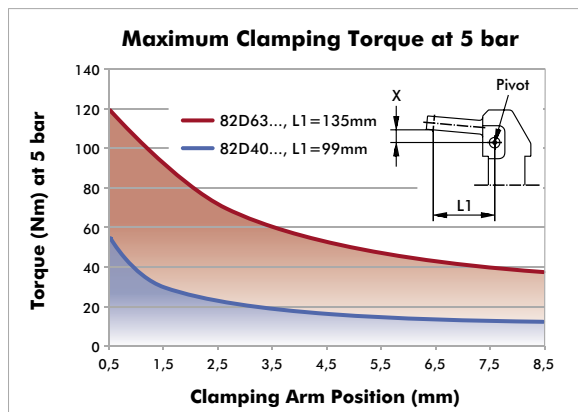


### Concept guideline (with reference to axis of clamping arm rotation)



All details apply under an air pressure of 6 bar and opening and closure times of 1 second each

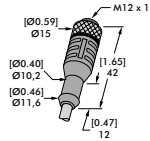
### Diagram of clamping torque



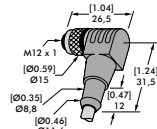
# 82D40-2/82D63-5 ACCESSORIES

Enclosed Pneumatic Power Clamps | Dual Arm | Ordering Information

Clamping Arms		Order no. for Structural component		Comment
Clamping are variant	Clamping position	82D40-223C900B	82D63-523C900B	
U-central	vertical	<b>8JG-065-1-01</b>	<b>8JG-069-1-01</b>	sets of U-type clamping arms consist of clamping arm, links and screws
lateral right/left	vertical	<b>8JG-066-1-01<sup>1)</sup></b>	<b>8JG-070-1-01<sup>2)</sup></b>	sets of lateral clamping arms consist of 1) clamping arm, links and screws 2) clamping arm and set screws you need 2 sets of clamping arms
lateral both sides	vertical	<b>8JG-066-1-01<sup>1)</sup></b>	<b>8JG-070-1-01<sup>2)</sup></b>	you need 4 sets of clamping arms



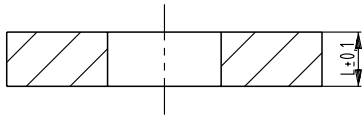
Connector socket M12x1 straight, 5-pin



Connector socket M12x1 angular, 4-pin

Connector Cable (includes 1 connector socket & 5 m cable)	Order no. for Structural component	
	82D40-223C900	82D63-523C900
Connector socket M12x1 straight, 5-pin	<b>8EL-002-1</b>	<b>8EL-002-1</b>
Connector socket M12x1 angular, 4-pin	<b>8EL-003-1</b>	<b>8EL-003-1</b>

Opening Angle Limiter	Order no. for Structural component			
	82D40-223C900		82D63-523C900	
Angle	Length	Order No.	Length	Order No.
180° (Standard)	11,4mm	<b>8CE-342-1</b>	14,4mm	<b>8CE-362-1</b>
160°	15,1mm	<b>8CE-340-1</b>	20,0mm	<b>8CE-360-1</b>
140°	18,5mm	<b>8CE-338-1</b>	24,8mm	<b>8CE-358-1</b>
120°	22,2mm	<b>8CE-336-1</b>	29,6mm	<b>8CE-356-1</b>
100°	25,8mm	<b>8CE-334-1</b>	34,3mm	<b>8CE-354-1</b>
80°	28,0mm	<b>8CE-332-1</b>	39,0mm	<b>8CE-352-1</b>
60°	33,0mm	<b>8CE-330-1</b>	43,8mm	<b>8CE-350-1</b>
40°	37,0mm	<b>8CE-328-1</b>	49,1mm	<b>8CE-348-1</b>
20°	41,8mm	<b>8CE-326-1</b>	56,2mm	<b>8CE-346-1</b>



Shim Plates (for clamping arm)	Fit for model 82D40-2								Fit for model 82D63-5									
	Model	A1	A2	D2	D3	B9	B10	B12	L10	Model	A1	A2	D2	D3	B9	B10	B12	L10
	<b>82ZB-SH4001</b>		0,1							<b>82ZB-SH5001</b>		0,1						
	<b>82ZB-SH4002</b>		0,2							<b>82ZB-SH5002</b>		0,2						
	<b>82ZB-SH4005</b>	42	0,5	6,5	7	6	20	20	12	<b>82ZB-SH5005</b>	65	0,5	6,5	9	10	30	30	16
	<b>82ZB-SH4010</b>		1,0							<b>82ZB-SH5010</b>		1,0						
	<b>82ZB-SH4020</b>		2,0							<b>82ZB-SH5020</b>		2,0						
	<b>82ZB-SH4050</b>		5,0							<b>82ZB-SH5050</b>		5,0						

Spare Parts	Order no. for Structural component	
	82D40-2	82D63-5
Cylinder	<b>8PW-016-1</b>	<b>8PW-024-2</b>
Integrated sensing system C9 Connector plug M12x1	<b>8EA-024-2</b>	<b>8EA-024-2</b>